



Scotland Road, Chesterton, Cambridge, CB4 1QE

CHEFFINS

Scotland Road

Chesterton, Cambridge,
CB4 1QE

- Minimum 12 Month Tenancy
- Available from 14/07/2025
- Unfurnished
- EPC: C
- Council Tax Band: F
- Gas Central Heating
- 2 Allocated Parking Spaces
- Garden

A well presented 5 bedroom town house located in Chesterton. The accommodation arranged over 3 floors comprises entrance hall, living room, kitchen, cloakroom, 4 double bedrooms, study/bedroom 5 and 3 bathrooms (2 en suite shower rooms). Enclosed rear garden and 2 allocated parking spaces. We regret no pets or sharers. Unfurnished. Available from 14/07/2025. EPC: C and Council Tax Band: F.

5 3 2

£1,950 PCM





LOCATION



The property is located in the heart of Chesterton close to a good range of local amenities on the nearby High Street. Cambridge city centre is approximately 1.5 miles away and the location is convenient for access to the Science Park, A14/M11 and Cambridge and Cambridge North railway stations.

STORM PORCH

doors to:

ENTRANCE HALL

stairs rising to first floor and doors to cloakroom, living room and kitchen off.

CLOAKROOM

wc with window to front aspect above and corner wash basin.

LIVING ROOM

built in store cupboard, window to rear aspect and patio doors to rear garden.

KITCHEN

fitted with base and wall units, work tops, sink with window to front aspect above, integrated appliances including oven and grill, gas hob with extractor hood above, fridge freezer and dishwasher and space and plumbing for a washing machine (washing machine can be provided).

STAIRS/FIRST FLOOR LANDING

stairs rising to second floor, airing cupboard and doors to bedrooms 1 & 2 off.

BEDROOM 1

fitted double wardrobe, window to rear aspect and patio doors to rear aspect with Juliet balcony and door to:

EN SUITE SHOWER ROOM

shower enclosure, wc, wash basin with mirror above and heated towel rail.

BEDROOM 2

2 windows to front aspect and door to:

EN SUITE SHOWER ROOM

shower enclosure, wc, wash basin with mirror above and heated towel rail.

STAIRS/SECOND FLOOR LANDING

doors to bedrooms 3, 4 & 5 and bathroom off.

BEDROOM 3

2 windows to rear aspect.

BEDROOM 4

window to front aspect.

STUDY/BEDROOM 5

window to front aspect.

BATHROOM

shower enclosure, bath, wc, wash basin with mirrored cabinet above and heated towel rail.

EXTERIOR FRONT

communal grounds to the front principally laid to lawn with beech hedge and pathways to entrance doors.

EXTERIOR REAR

enclosed rear garden principally laid to lawn with patio, shrub borders, garden shed and rear gate with access to secure car park with automated gates. The property comes with 2 allocated parking spaces; 1 located within the gated car park the other outside the gated car park (opposite the gates) on a private road.

LETTING AGENT NOTES

For more information on this property please refer to the Material Information brochure on our Website.

Term - Minimum 12 month tenancy

Holding Deposit - £450

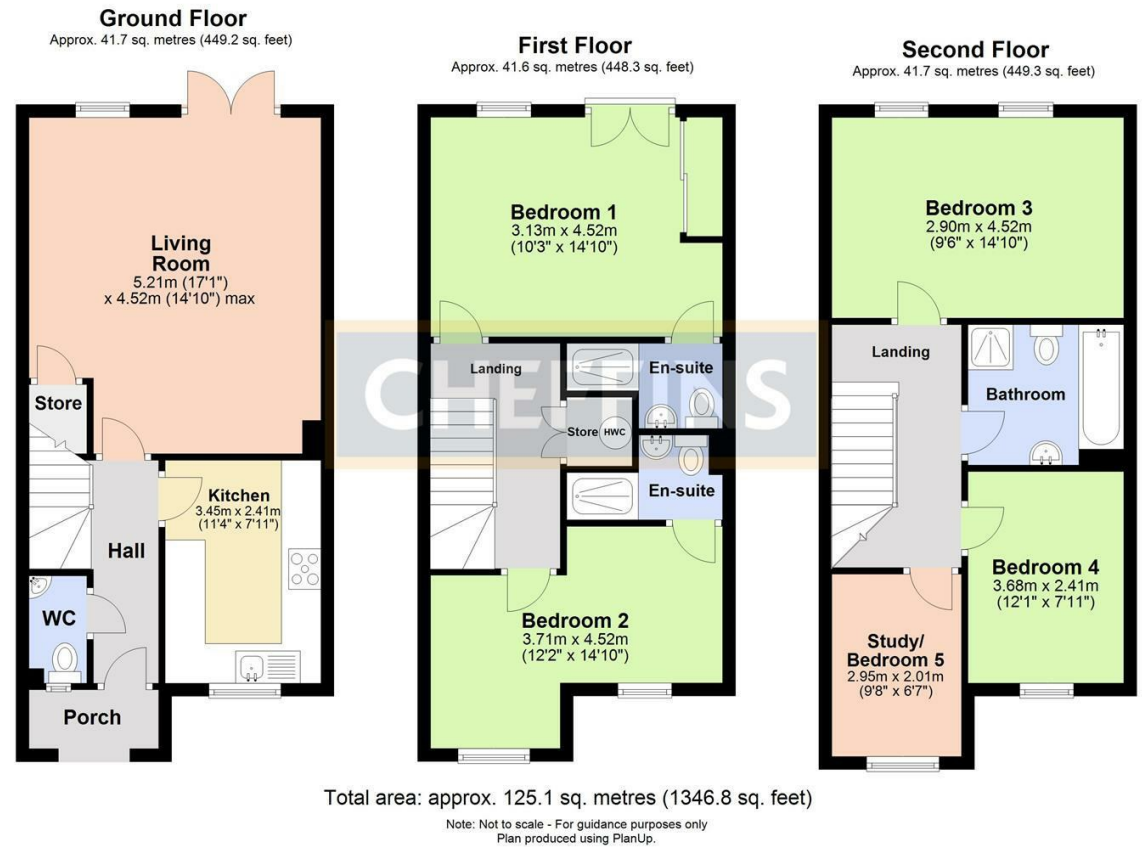
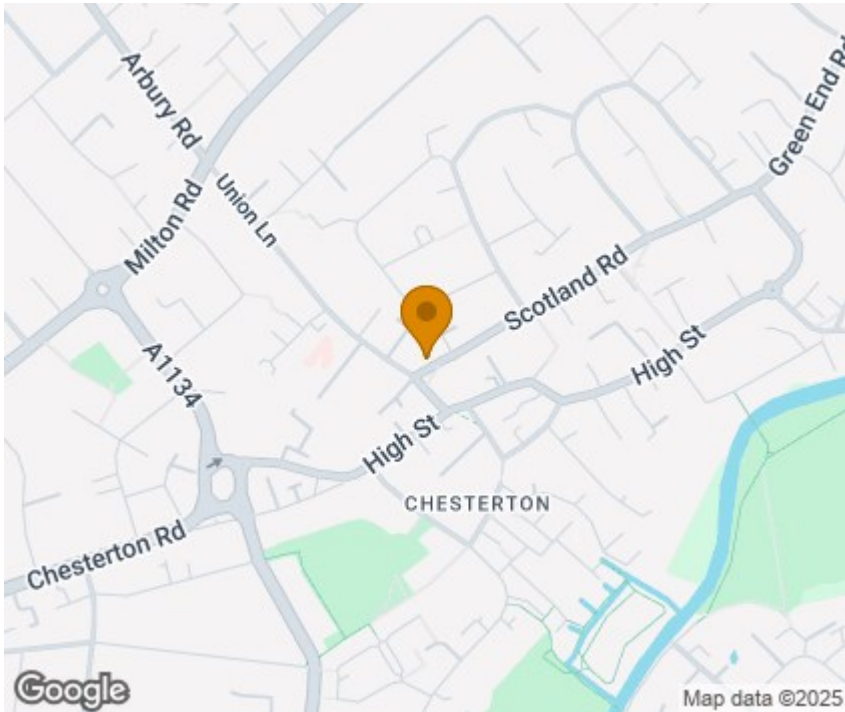
Deposit - £2250







Energy Efficiency Rating		
Very energy efficient - lower running costs		
(92 plus) A		
(81-91) B		
(69-80) C		
(55-68) D		
(39-54) E		
(21-38) F		
(1-20) G		
Not energy efficient - higher running costs		
Current	Potential	
78	88	
England & Wales		
EU Directive 2002/91/EC		



Agents note:

[For more information on this property please refer to the Material Information Brochure on our website.](#)

Clifton House, 1-2 Clifton Road, Cambridge, Cambridgeshire, CB1 7EA | 01223 271916 | cheffins.co.uk

IMPORTANT: we would like to inform prospective purchasers that these sales particulars have been prepared as a general guide only. A detailed survey has not been carried out, nor the services, appliances and fittings tested. Room sizes should not be relied upon for furnishing purposes and are approximate. If floor plans are included, they are for guidance only and illustration purposes only and may not be to scale. If there are any important matters likely to affect your decision to buy, please contact us before viewing the property.



CHEFFINS